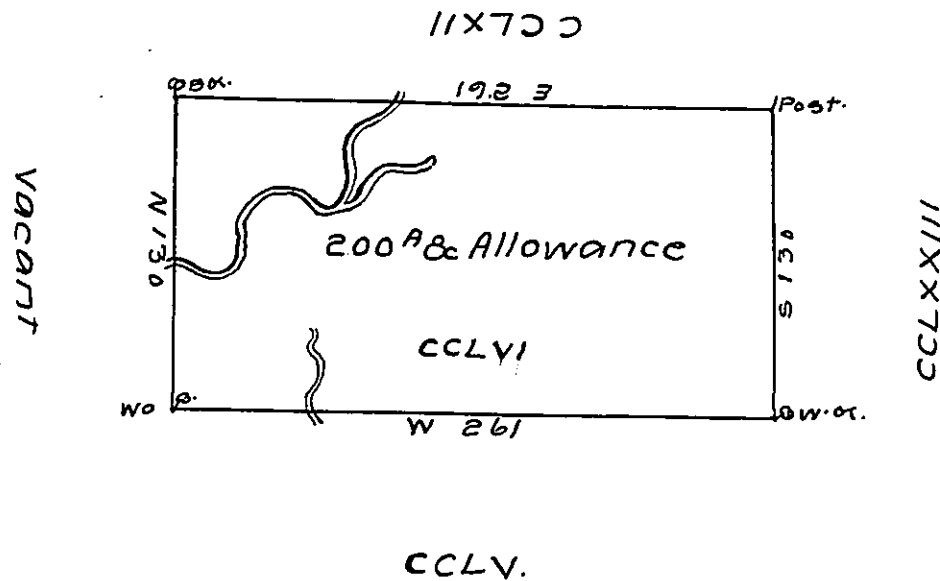


7/4/5



In Pursuance of an Act of General Assembly of the State of Pennsylvania passed the 24th Day of February 1785 Entitled an act for directing the mode of Distributing the donation lands promised the troops by this Commonwealth and by order of the Surveyor General, with the approbation of the Honorable the Executive Council, I have surveyed on the 20th day of October 1785 the above Described Tract of Two hundred Acres of land & Allow^e of Six & Cent for Roads & N^o CCLVI Situate in district N^o 2, on the West side of Alligany River in Westmoreland County ss

To John Lukens Esq^r }
Surveyor General. }

Jn^o Henderson D.S. (reverse)
attached { N^o 250 John Evans
Dist 2 24 Oct. 1803 Patent
to be del^d until JE
is identified

IN TESTIMONY that the above is a copy of the original remaining on file in the Department of Internal Affairs of Pennsylvania, made conformably to an Act of Assembly approved the 16th day of February, 1833, I have hereunto set my Hand and caused the Seal of said Department to be affixed at Harrisburg, this Sixteenth day of February 1921

John F. Woodward
Secretary of Internal Affairs.